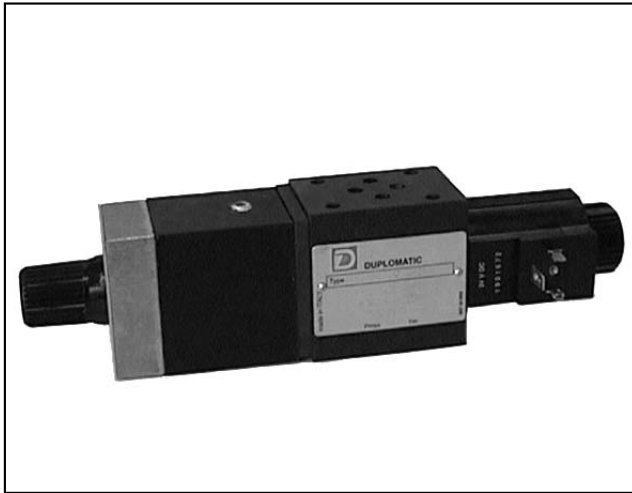




**DIPLOMATIC**  
HYDRAULICS

66 250/104 ED



# RL1M

## ELECTRIC FAST/SLOW SPEED SELECTION VALVE

### SERIES 21

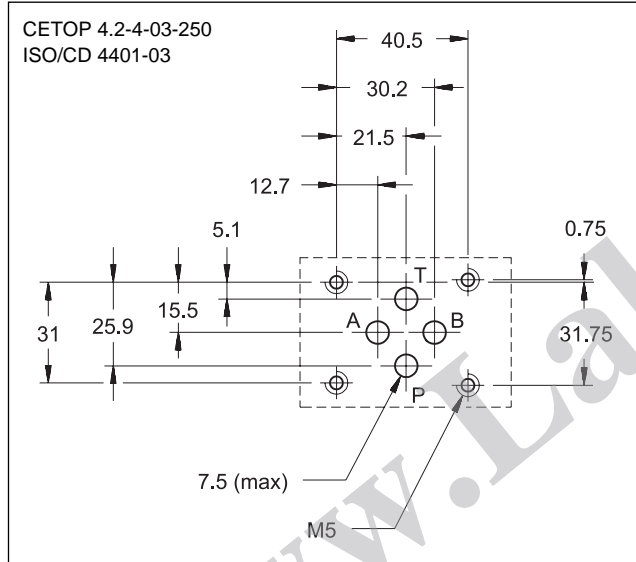
**MODULAR VERSION**

**CETOP 03**

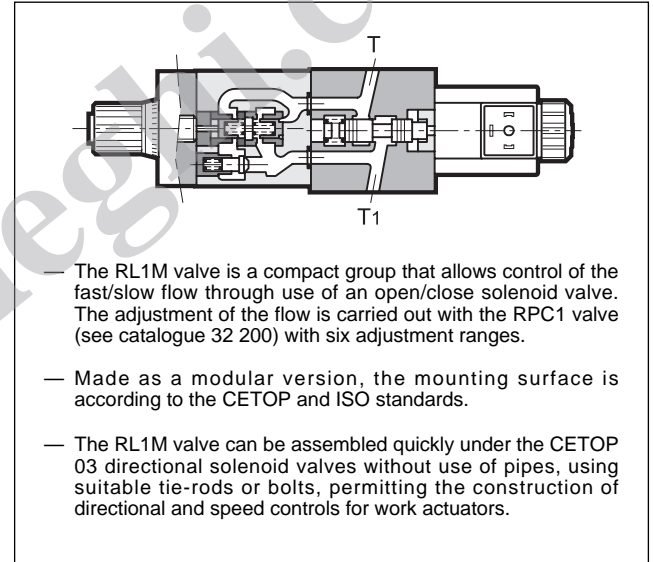
**p max 250 bar**

**Q max (see performance ratings table)**

#### MOUNTING INTERFACE



#### OPERATING PRINCIPLE



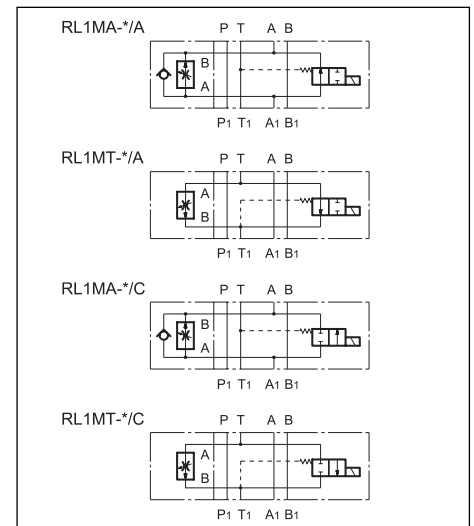
#### CONFIGURATIONS (see Hydraulic symbols table)

- Configuration "A": meter out control from the actuator on chamber A.
- Configuration "T": control on discharge T of the directional solenoid valve for speed control in both directions of movement.

#### PERFORMANCE RATINGS (measured with mineral oil of viscosity 36cSt at 50°C)

Maximum operating pressure	bar	250
Maximum flow rate in the controlled lines	l/min	1-4-10-16-22-30
Maximum flow rate in the free lines	l/min	65
Minimum controlled flow rate	l/min	0,08
Ambient temperature range	°C	-20 ÷ +50
Fluid temperature range	°C	-20 ÷ +80
Fluid viscosity range	cSt	10 ÷ 400
Recommended viscosity	cSt	25
Degree of fluid contamination	According to NAS 1638 class 10	
Mass	kg	3

#### HYDRAULIC SYMBOLS





## 1 - IDENTIFICATION CODE

<b>R</b>	<b>L</b>	<b>1</b>	<b>M</b>	<b>-</b>	<b>/</b>	<b>/</b>	<b>21</b>	<b>/</b>	<b>/</b>	<b>/</b>	<b>/</b>
Electric fast/slow speed selection valve		CETOP 03 size		Modular version		Adjustments: A = adjustment on chamber A of the actuator; T = adjustment on discharge T of the directional solenoid valve		Flow adjustment range: 1 = 1 l/min      16 = 16 l/min 4 = 4 l/min      22 = 22 l/min 10 = 10 l/min    30 = 30 l/min		Seals: omit for mineral oils V = viton for special fluids	
Series No. (the overall and mounting dimensions remain unchanged from 20 to 29)								Electrical features (voltage and frequency) (see catalogue 41 200, par. 6.2)		CM = Manual override, boot protected (omit if not required)	
A = normally open solenoid valve C = normally closed solenoid valve											

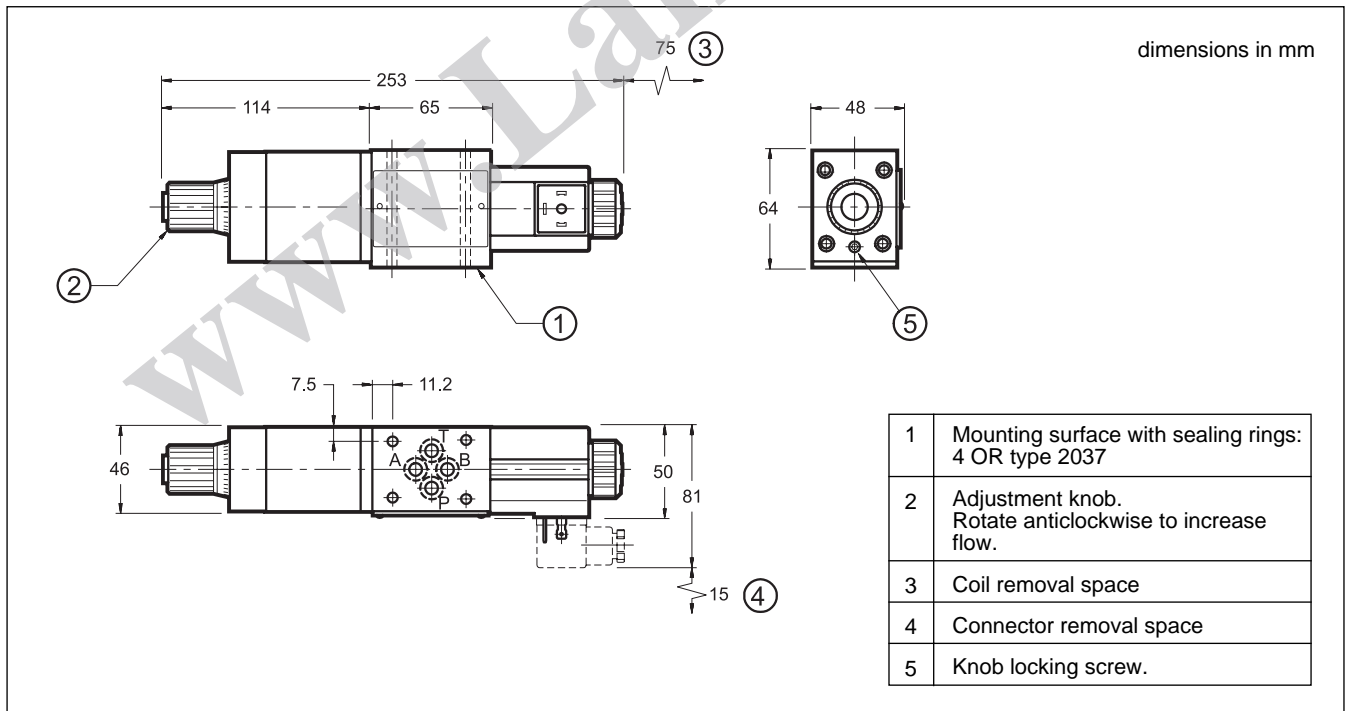
**NOTE :** for more information regarding the flow control valve, see catalogue 32 200

**NOTE:** The solenoid valves are never supplied with connector. Connectors must be ordered separately. For the identification of the connector type to be ordered, please see catalogue 49 000.

## 2 - HYDRAULIC FLUIDS

Use mineral oil-based hydraulic fluids, with the addition of suitable anti-frothing and anti-oxidizing agents. For the use of other types (water glycol, phosphate esters and others), please consult our technical department.

## 3 - OVERALL AND MOUNTING DIMENSIONS



**DIPLOMATIC OLEODINAMICA SpA**  
20025 LEGNANO (MI) - P.le Bozzi, 1 / Via Edison  
Tel. 0331/472111 - Fax 0331/548328